

Wdely used to oil exploitation, oil refining, chemical industry,military industry, offshore oil platform, oil carrier and other hazardous environment.

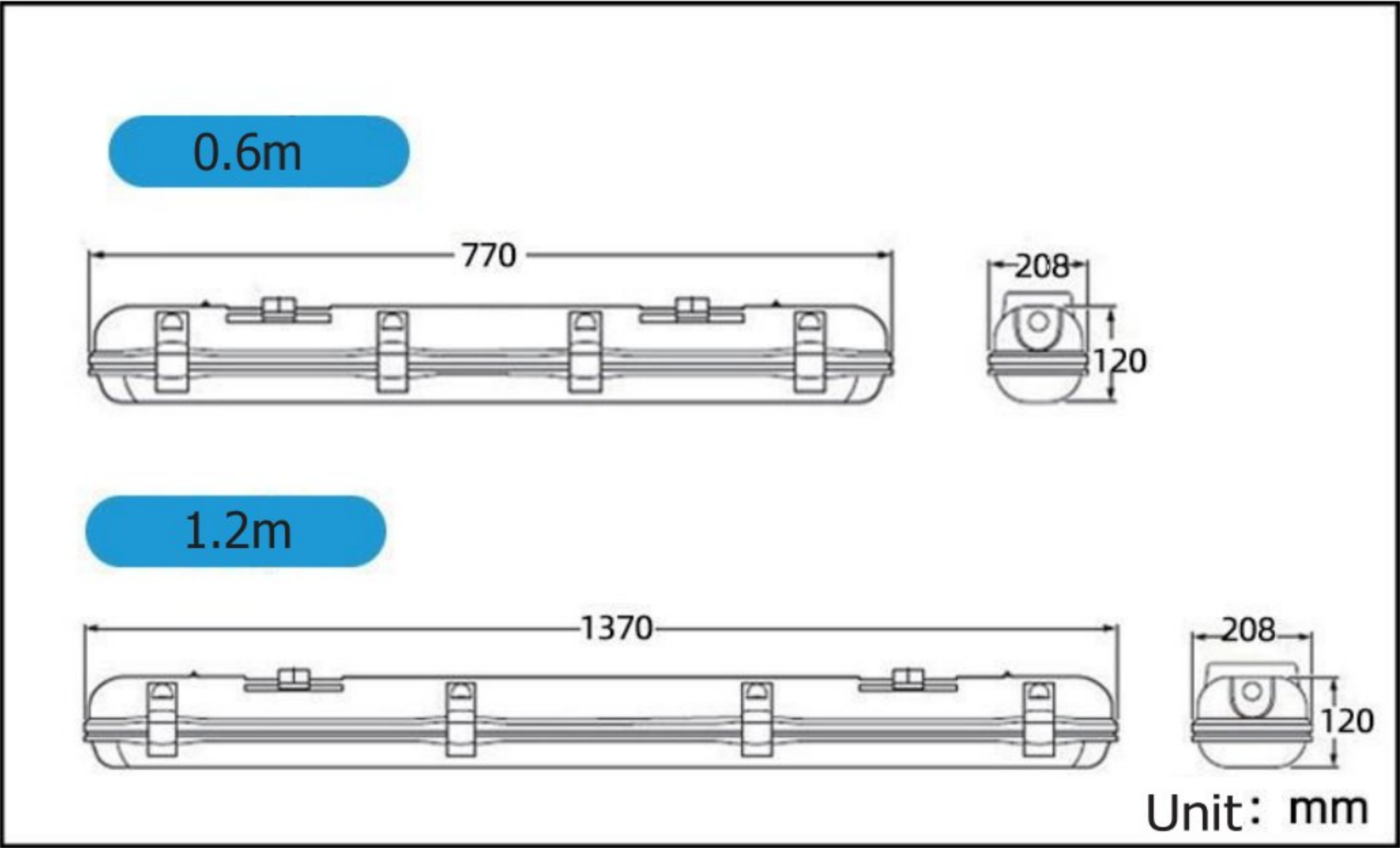
- Explosive gas environment, zone1 zone 2.
- Apply to flammable dust atmosphere, zone21, zone22.
- IIA IIB explosive gas environment.
- Apply to T1- T6 Temperature group.
- Applic ble to oil fields, petrochemical, drilling, chemical enterprises and other flammable and explosive places.
- Suitable for a variety of outfield, infield, high ceiling, workshop, warehouse and other places, but also can be used in fine work outfield as a platform light.



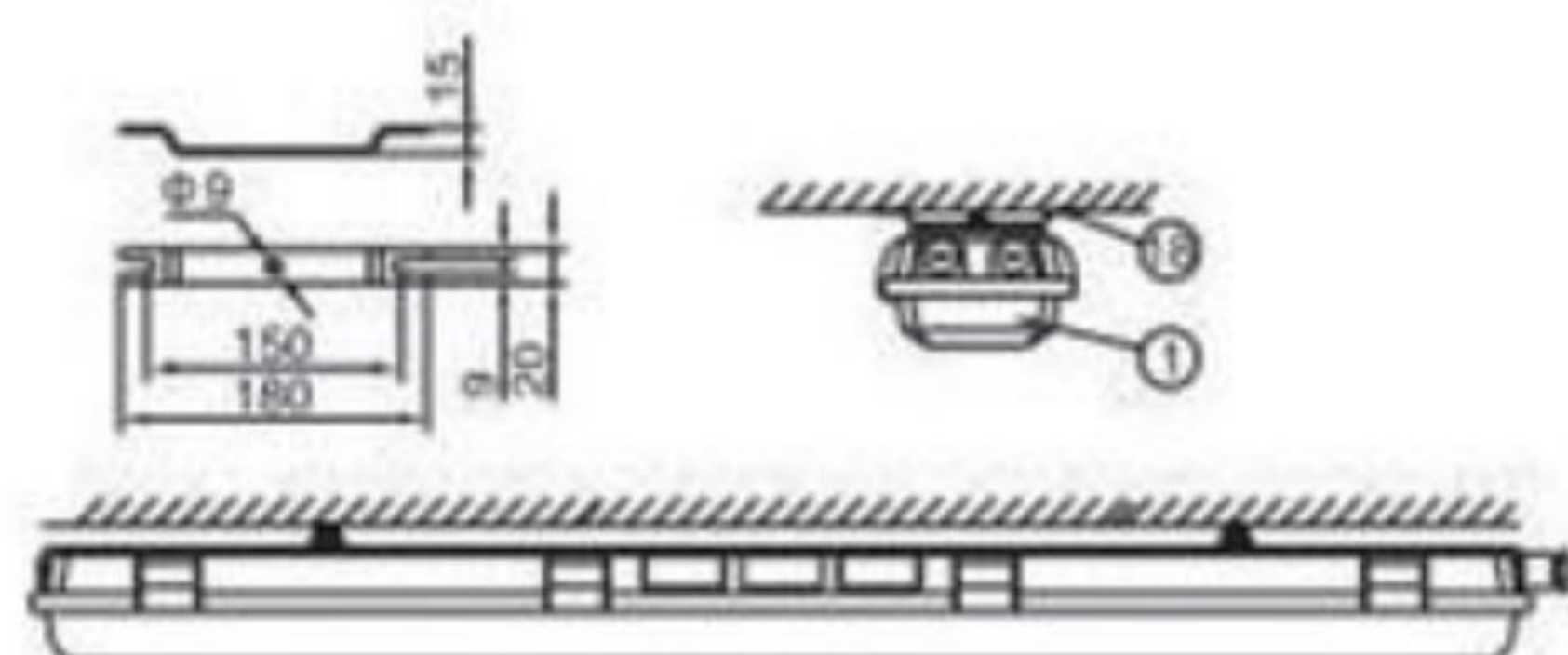
Technical parameters

Power :	2x9W	2x18W
Light efficiency :	>130lm/W	
Input voltage	AC220V	
Input frequency :	50/60Hz	
Service life :	50000hours	
Power factor :	PF>0.95	
Ambient temp :	-55℃~+60℃	
Ex mark :	Ex d e II C T6 Gb	
IP rating :	IP66	
Protection grade :	WF2	
Cable specification :	G1/2 "inlet,sutaibloe for Φ 6 mm ~ 10 mm Φ cable	
Installation :	Ceiling type, wall type, derrick type, flange type, guardrail type, curved lever type	
Size :	770x208x120mm	1370x208x120mm

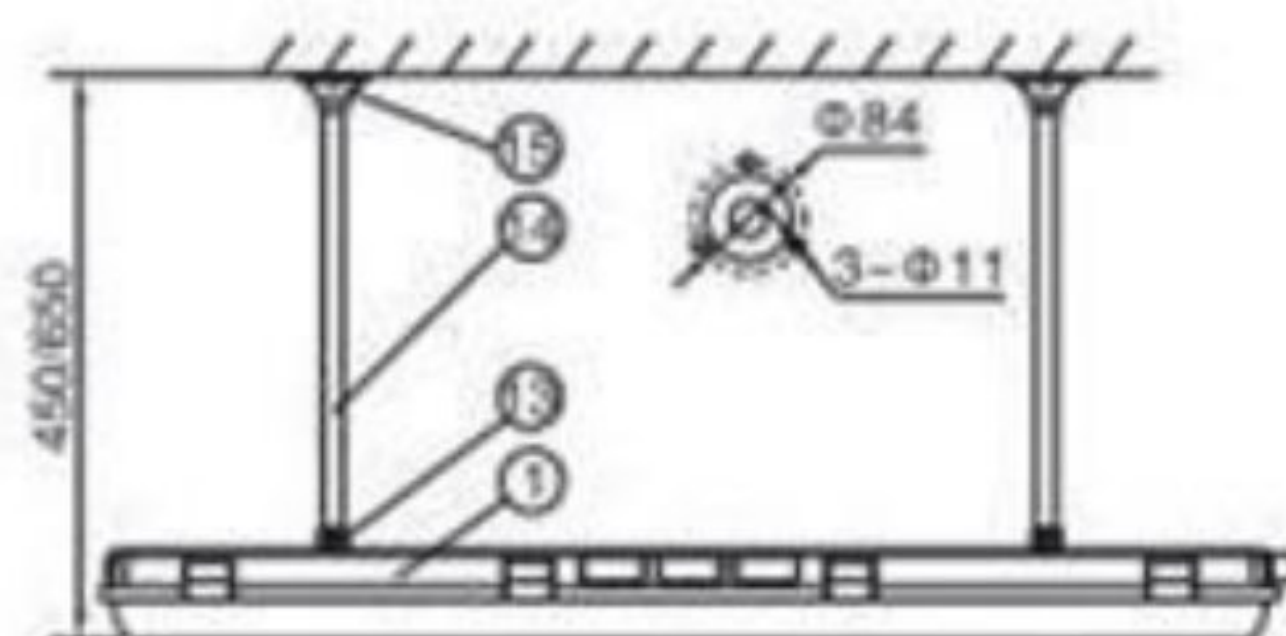
Product size



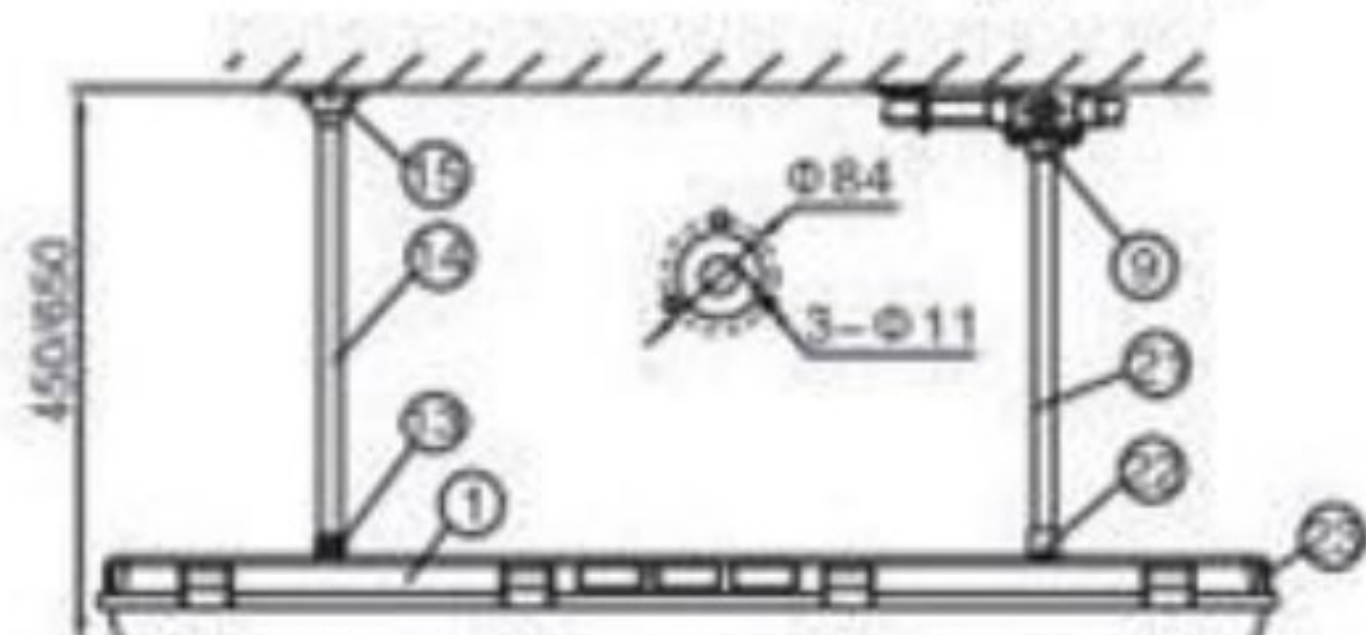
Installation



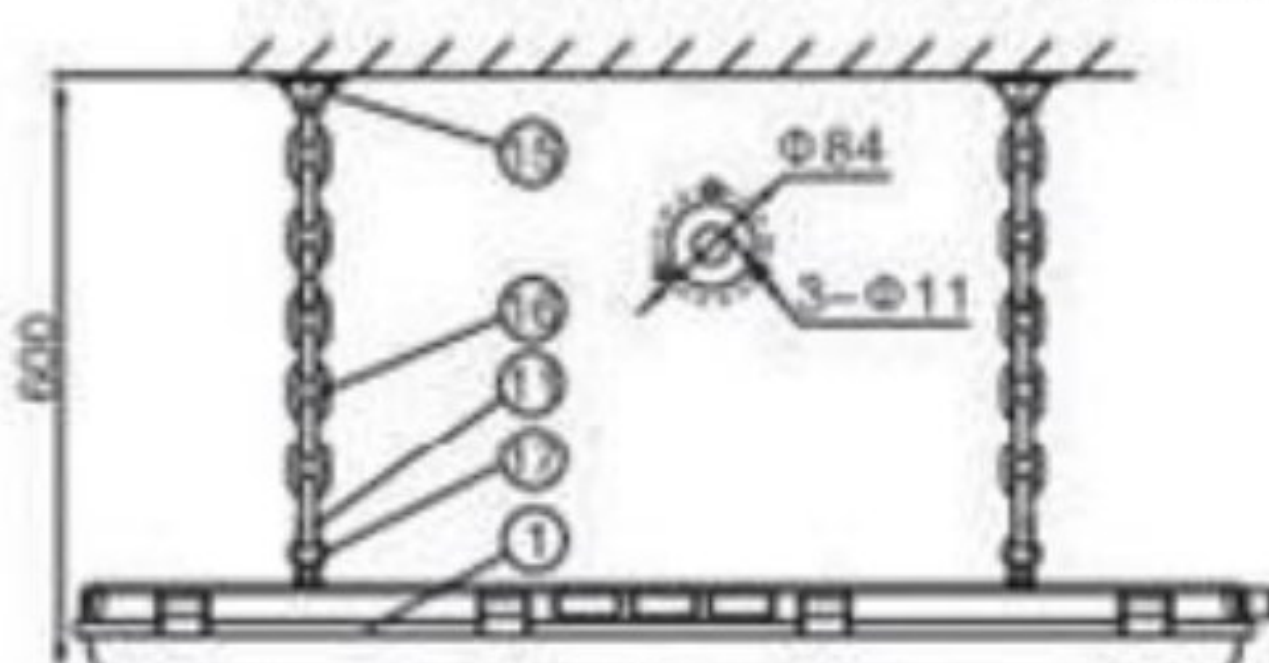
Ceiling type(x)



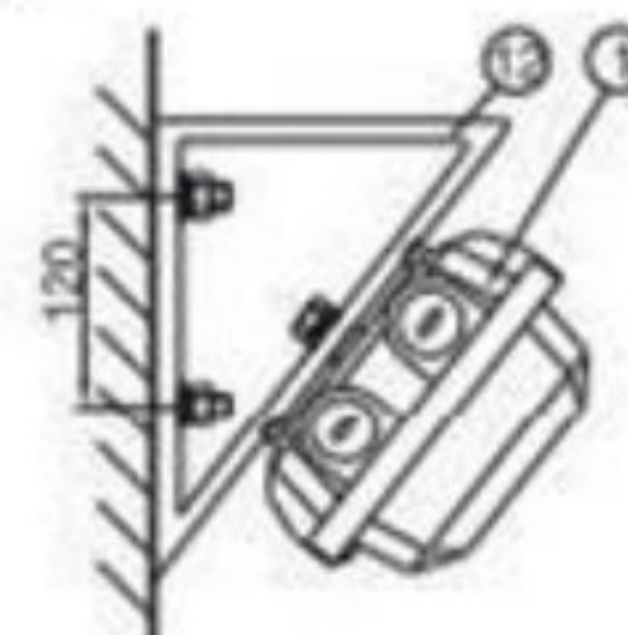
Derrick type-Side in line



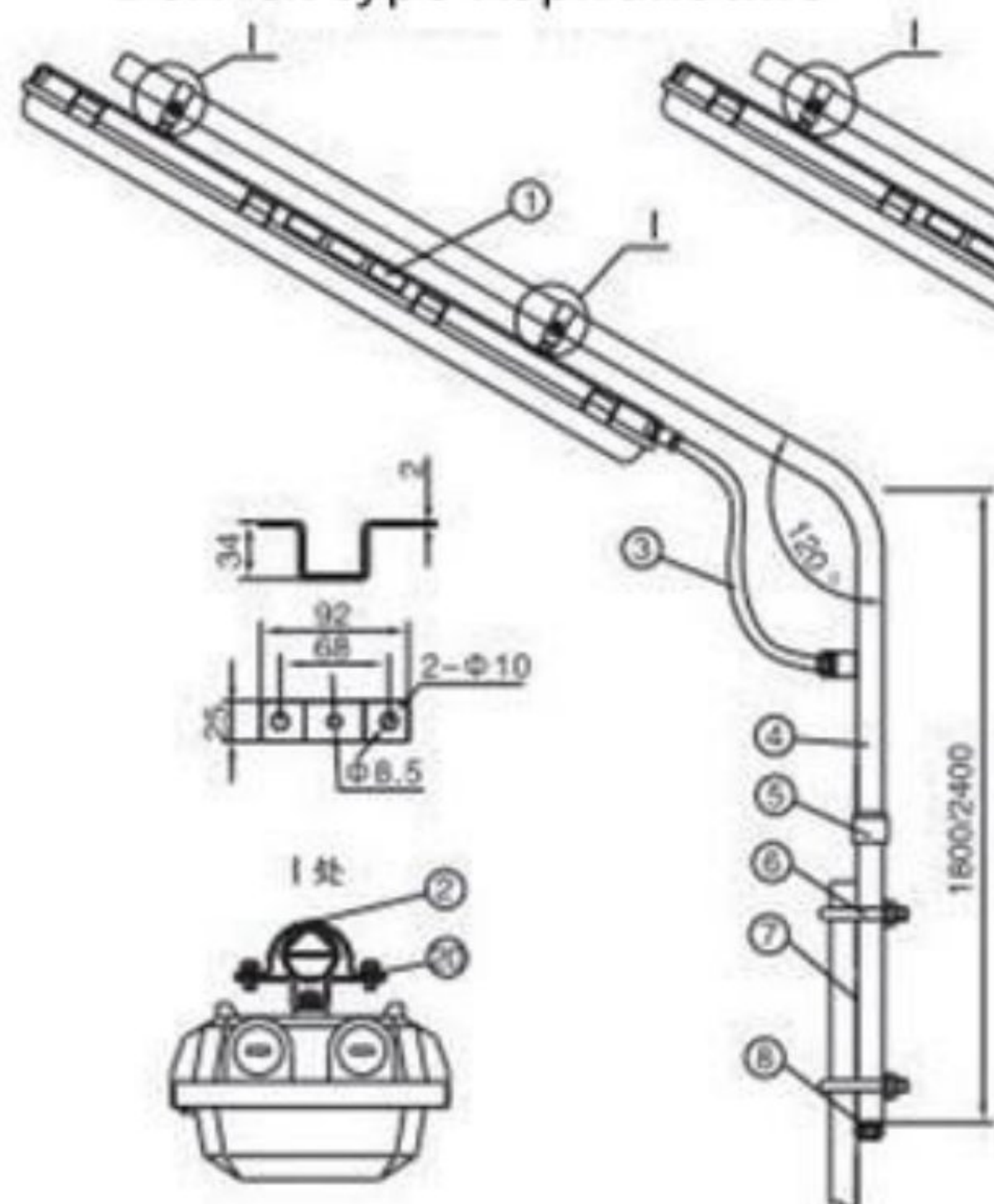
Derrick type-Aspirant line



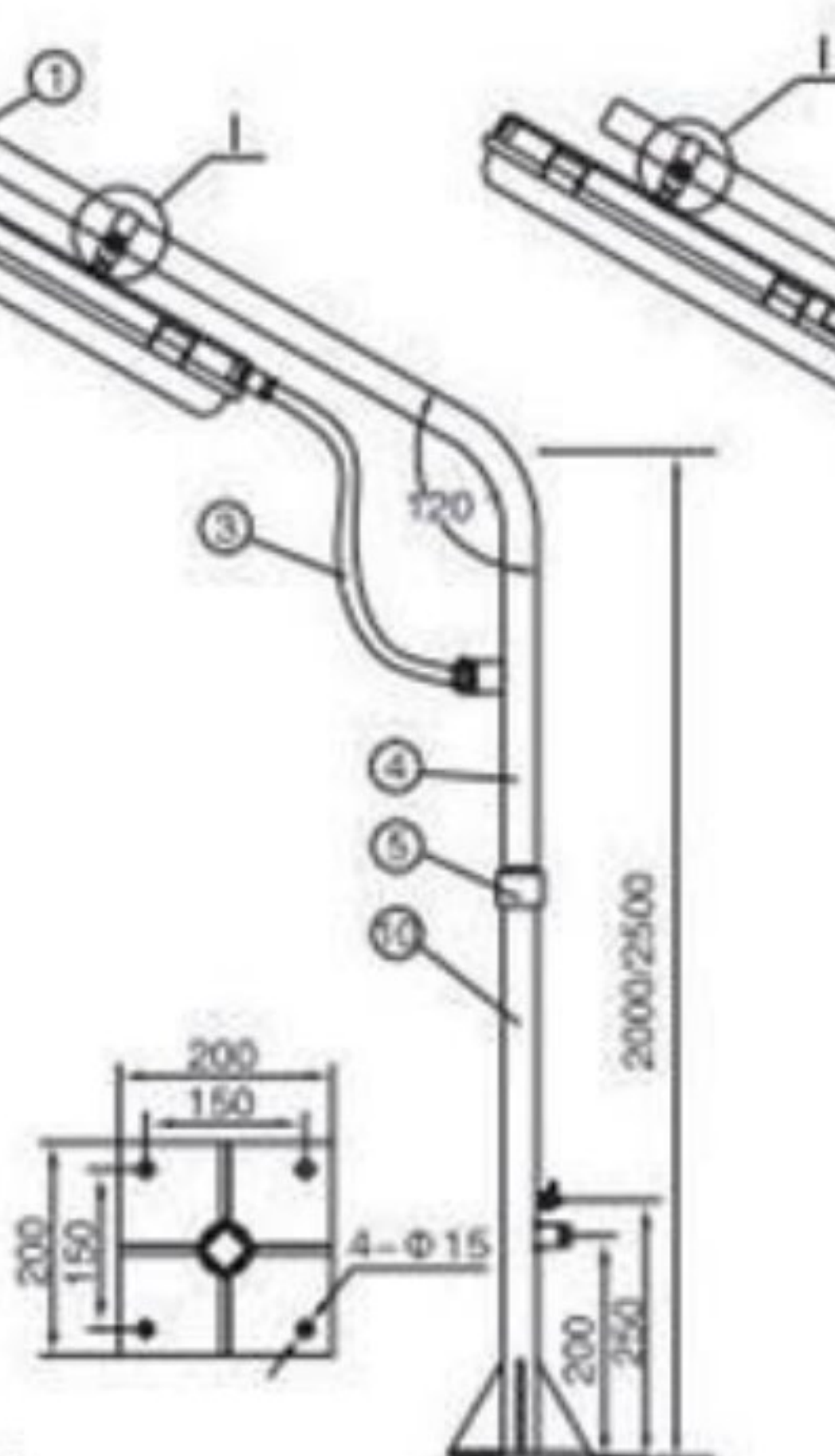
Hanging chain type



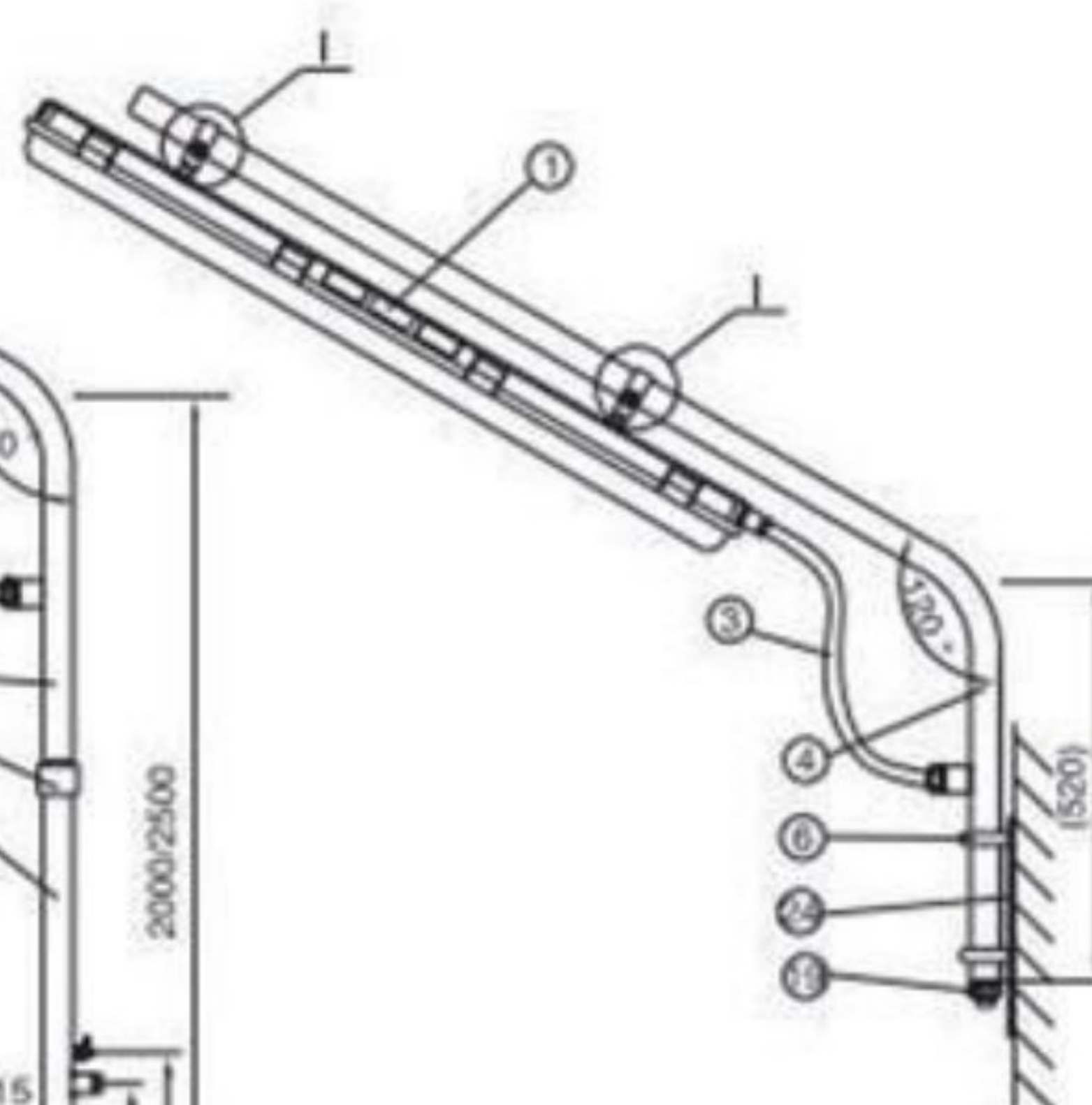
Wall type



Guardrail type



Flange type



Curved lever type